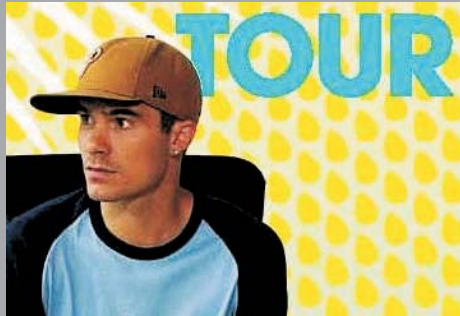


## Featured Artist:



### Agapé

(Dave Scherer) has inspired youth from San Juan, Puerto Rico to Spokane, WA with his relational ministry "Hip Hop Outreach." Using Rhythmic American Poetry (rap), he is able to reach the young people of today in a way that they really "get it." He combines dancing, rapping, storytelling and his fluency in Spanish to captivate his audience and challenge them to explore their faith in God. With his passion for diversity, he invites people to bridge the gaps that exist in today's society. He has produced two CDs and travels across the country with his ministry.

[www.hiphopoutreach.com](http://www.hiphopoutreach.com)

**Live at Fresh Fire 2008 !**



**Fresh Fire V**

Metro Chicago Synod  
Youth Ministry  
1420 W. Dickens Ave  
Chicago, IL 60614

[YouthMinistry@mcseca.org](mailto:YouthMinistry@mcseca.org)



**Youth Ministry Program**

Presents



# Fresh Fire V



**Saturday, February 16, 2008**

9:00 AM ~ 2:30 PM

LUTHERAN SCHOOL OF THEOLOGY  
1100 E. 55th Street \* Chicago, IL\* 60615  
773/256-0700 \* [www.lstc.edu](http://www.lstc.edu)

**A time of worship, fellowship, and  
growth for our synod youth  
and youth leaders!**

[www.YouthMinistry@mcseca.org](http://www.YouthMinistry@mcseca.org)

# 5th Annual Fresh Fire

You are invited to join us for a time of refreshing and sharing as we gather youth (Lutheran Youth Organization) and youth leaders from across the Chicago area.

## Agenda

- 9:00 Registration
- 9:30 Opening Worship w/ AGAPE
- 10:00 Service Project Workshops/Panels:
  - + The Night Ministry
  - + Interfaith Youth Core
  - + ELCA Student Advocacy Team
  - + Greening Congregations
  - + "How to plan a service project."
  - + "Why plan a service project?"
- 11:15 Repeat: Service Project Workshops
- 12:30 LUNCH
- 1:30 Assembly (Debriefing Session)
- 2:00 Closing Worship w/AGAPE
- 2:30 Adjourn

Some sessions have size restrictions, and are filled on first-come basis via the registration process.

### Please Note:

- Requirements for youth service projects:  
Please include your congregation's contribution of the following items:
- \* **Fleece material** for blankets (2 colors)  
1-yard long (each) per group of five
  - \* **Toiletry items** for individual hygiene kits

## **New** Youth Track & Leaders' Track

This year, we have included content and workshops that are intended for youth, as a developmental track. Also, youth leaders will discover that workshops and discussions are included for their development as well. This is a wonderful opportunity for interaction with members of our Metro Chicago Synod.

### Featured Lecturer

"How To Plan a Service Project"  
Leaders' Track

**Rev. Lawrence J. Clark**  
Executive Director, LTCA



The fundamental purpose of the **Lutheran Theological Center in Atlanta** is to develop leadership for the church through diverse experience and intensive theological study.  
website: [ltca.ltss.edu](http://ltca.ltss.edu)

"Greening Congregations"  
Youth Track



We promote eco-justice and care for creation beyond the walls of the church through hands-on involvement, political advocacy, publicity, and publications. **Rev. David M. Rhoads**, Director for Web of Creation. [www.WebofCreation.org](http://www.WebofCreation.org)

### Developmental Tracks

For <b>Youth</b>	For <b>Leaders</b>
+ Hands-on Workshops	+ Practical Training
+ Political Advocacy	+ Ideas & Discussions
+ Social Interaction	+ Networking
+ Environmental Focus	

# Registration Form

Registration for this event is being done on-line. Please direct your browser to the Metro Chicago Synod's web page, and follow the link to Fresh Fire:

[www.mtselca.org](http://www.mtselca.org)

The cost for this event is \$25 per person that includes the program and lunch.

## "A Fire to Serve"



Please register prior to  
Saturday, February 2, 2008.

If you are having trouble registering on-line, please contact Jeff at the Synod office, 773-248-0021.

\* \* \* \* \*

Direct **questions** about this event to:

YouthMinistry@[mtselca.org](http://mtselca.org)  
(or)  
Rev. Beverly Conway  
708/ 331-4100